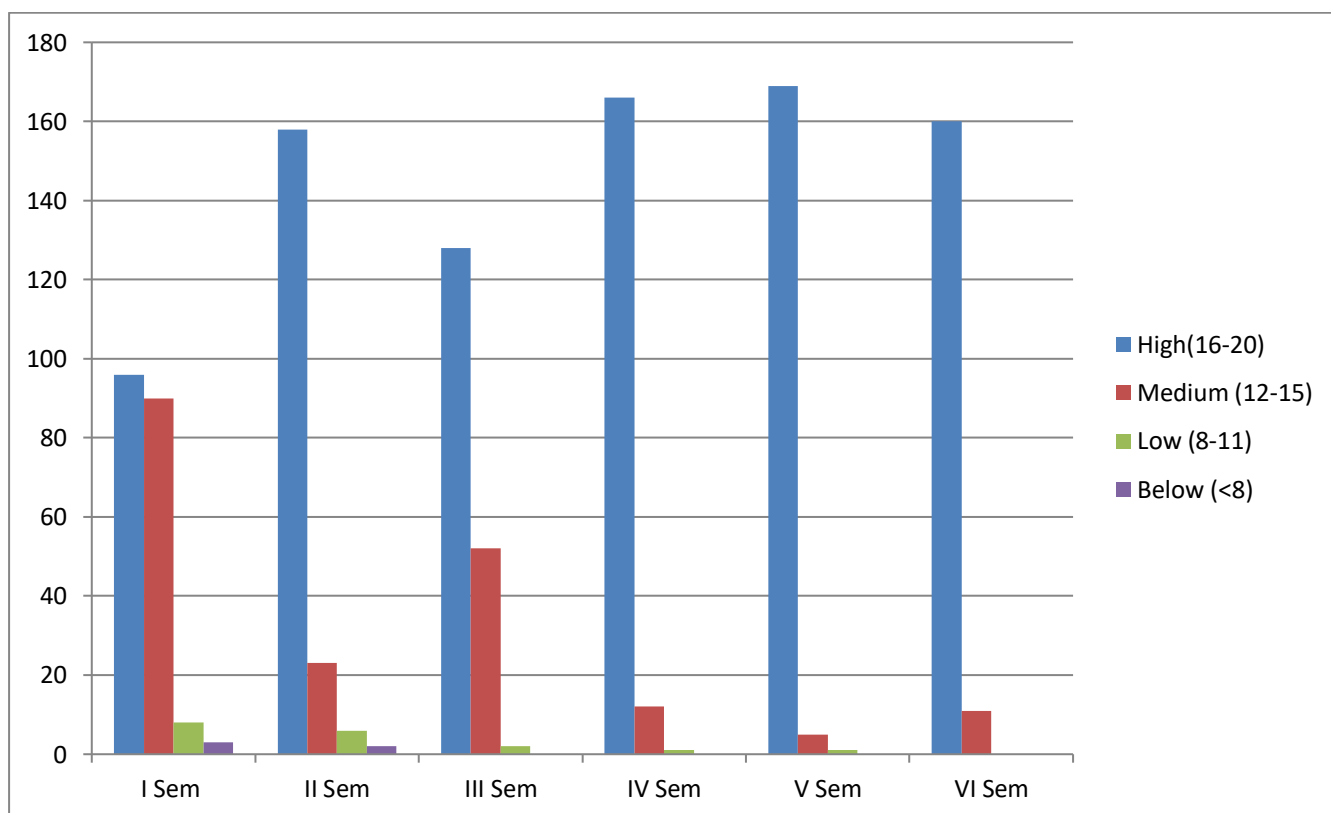
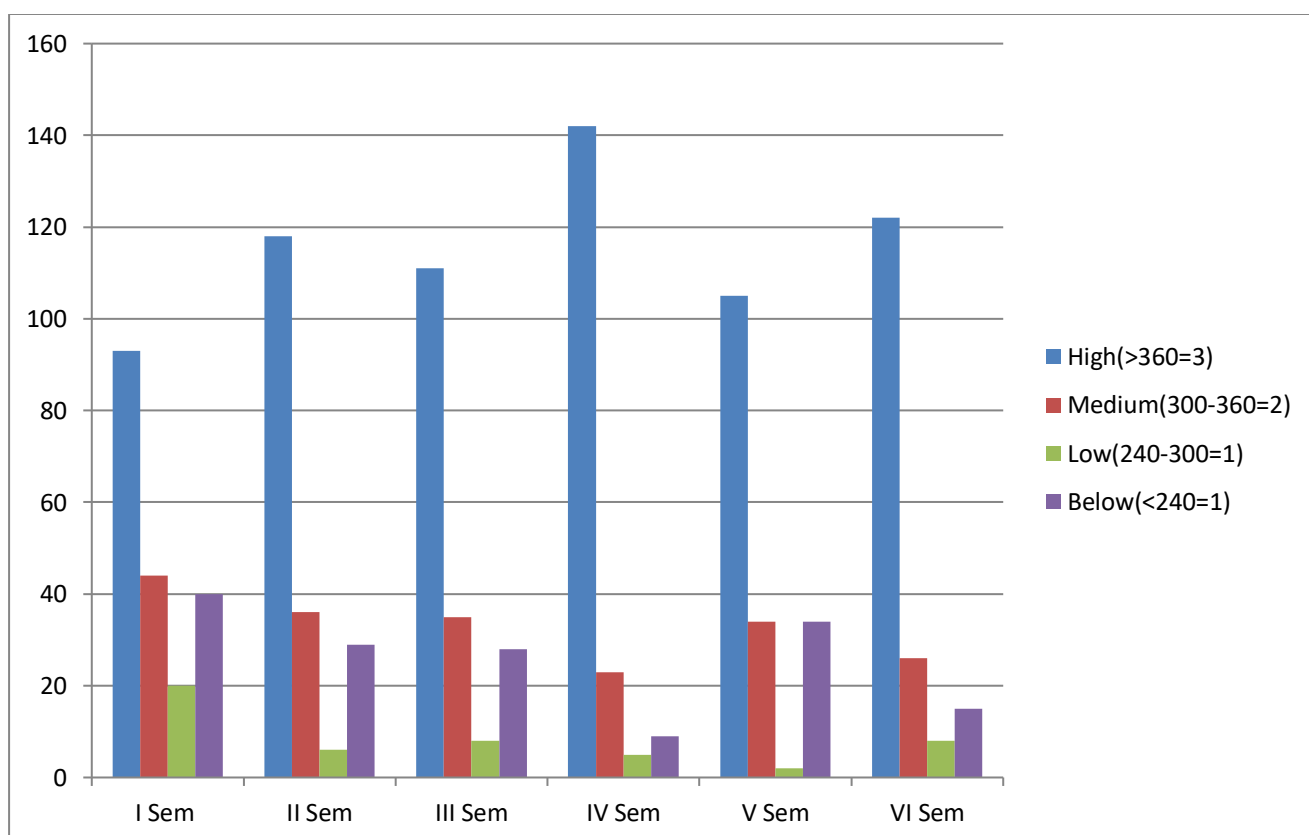


DEPARTMENT OF COMMERCE RESULT ANALYSIS

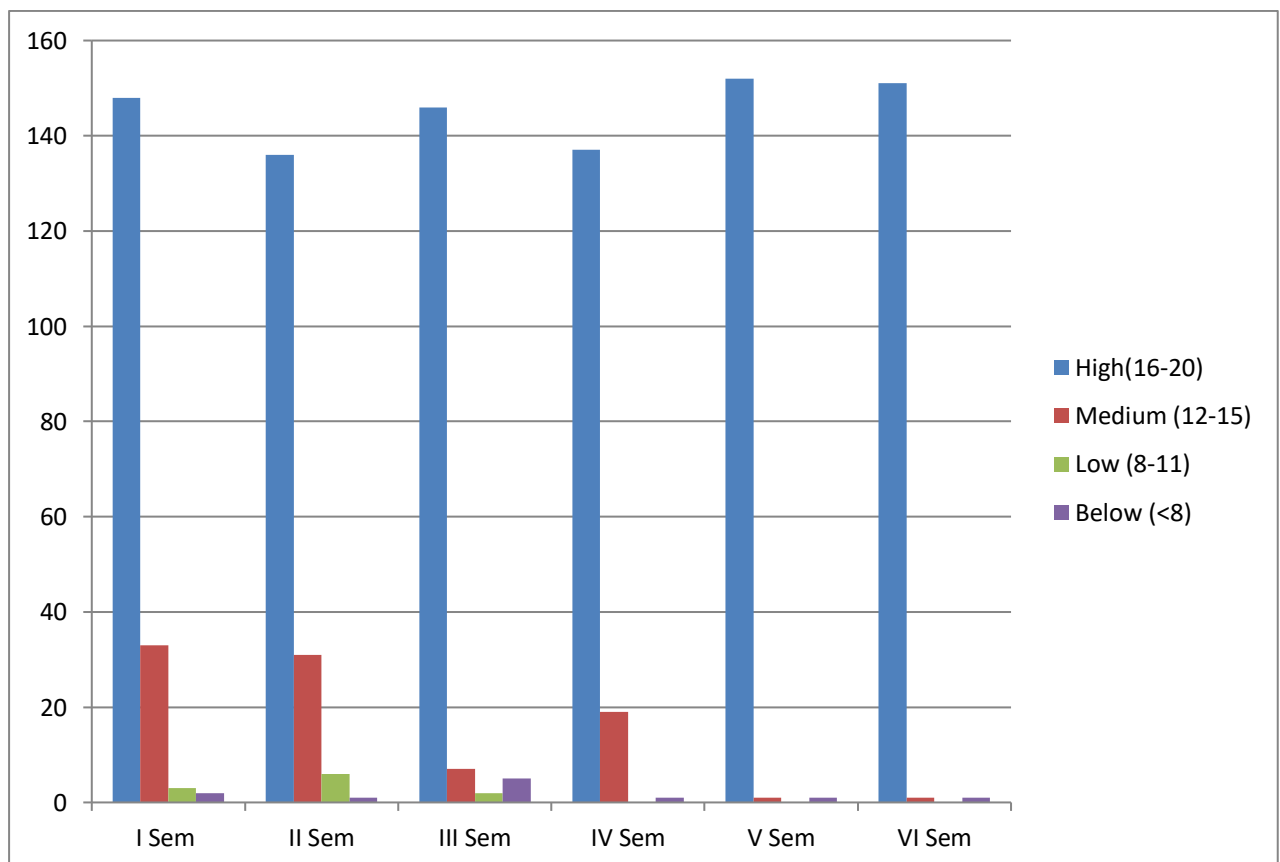
Internal Assessment						
	2012-13		2013-14		2014-15	
Internals	I Sem	II Sem	III Sem	IV Sem	V Sem	VI Sem
High(16-20)	96	158	128	166	169	160
Medium (12-15)	90	23	52	12	5	11
Low (8-11)	8	6	2	1	1	Nil
Below (<8)	3	2	Nil	Nil	Nil	Nil
Total No. Of Students	197	189	182	179	175	171



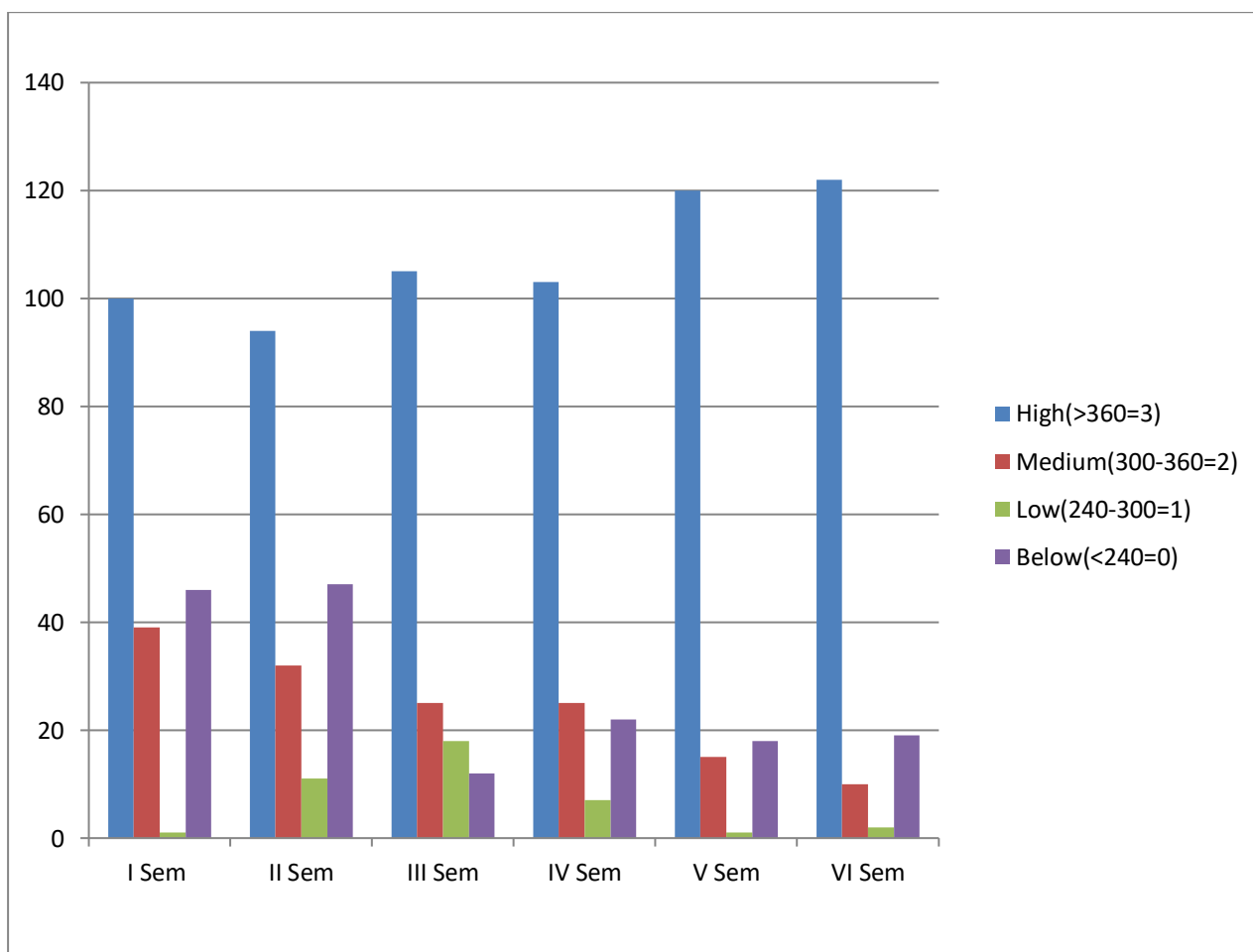
University Results						
	2012-13		2013-14		2014-15	
University	I Sem	II Sem	III Sem	IV Sem	V Sem	VI Sem
High(>360=3)	93	118	111	142	105	122
Medium(300-360=2)	44	36	35	23	34	26
Low(240-300=1)	20	6	8	5	2	8
Below(<240=0)	40	29	28	9	34	15
Total No. Of Students	197	189	182	179	175	171



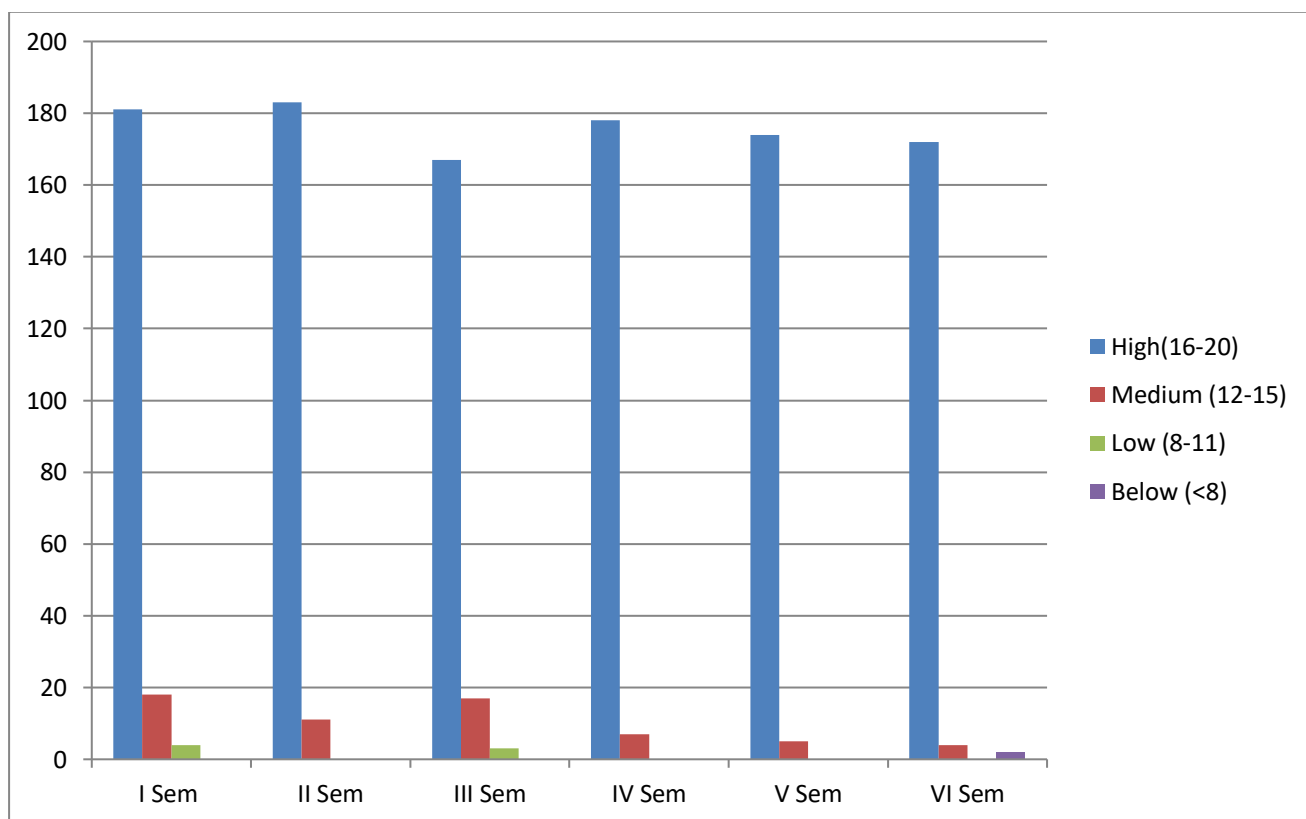
Internal Assessment						
	2013-14		2014-15		2015-16	
Internals	I Sem	II Sem	III Sem	IV Sem	V Sem	VI Sem
High(16-20)	148	136	146	137	152	151
Medium (12-15)	33	31	7	19	1	1
Low (8-11)	3	6	2	Nil	Nil	Nil
Below (<8)	2	1	5	1	1	1
Total No. Of Students	186	174	160	157	154	153



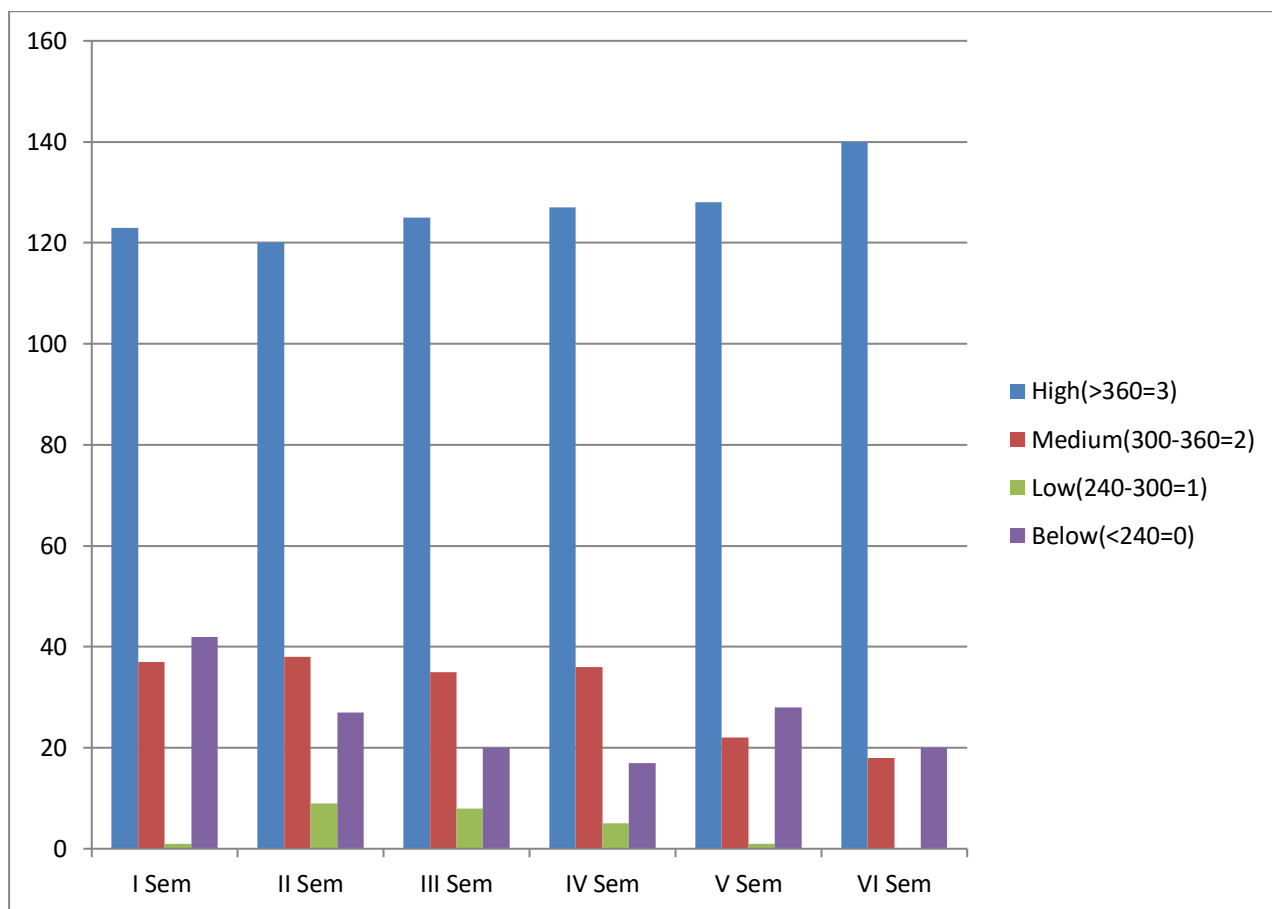
University Results						
	2013-14		2014-15		2015-16	
University	I Sem	II Sem	III Sem	IV Sem	V Sem	VI Sem
High(>360=3)	100	94	105	103	120	122
Medium(300-360=2)	39	32	25	25	15	10
Low(240-300=1)	1	11	18	7	1	2
Below(<240=0)	46	47	12	22	18	19
Total No. Of Students	186	174	160	157	154	153



Internal Assessment						
	2014-15		2015-16		2016-17	
Internals	I Sem	II Sem	III Sem	IV Sem	V Sem	VI Sem
High(16-20)	181	183	167	178	174	172
Medium (12-15)	18	11	17	7	5	4
Low (8-11)	4	Nil	3	Nil	Nil	Nil
Below (<8)	Nil	Nil	Nil	Nil	Nil	2
Total No. Of Students	203	194	188	185	179	178



University Results						
	2014-15		2015-16		2016-17	
University	I Sem	II Sem	III Sem	IV Sem	V Sem	VI Sem
High(>360=3)	123	120	125	127	128	140
Medium(300-360=2)	37	38	35	36	22	18
Low(240-300=1)	1	9	8	5	1	Nil
Below(<240=0)	42	27	20	17	28	20
Total No. Of Students	203	194	188	185	179	178



Analysis of Results (Outcome) 2012-13 to 2014-15 Batches

Analysis of the results from 2012-13 to 2014-15 batch shows that there is a recognisable improvement in the results of the students belonging to high category (>360). It was just 47.20% in the I Semester and it raise to 71.35% in VI Semester. At the same time there is a considerable decline in the results of students belonging to below category (<240) i.e., from 20.30% to 8.77% for the same period.

Of course we accept the dropout of the batch of 13.2% for the reasons beyond our limit. This is mostly due to marriage and a few students opting for jobs before finishing their course and majority of the students are from rural area and from low income group families.

Analysis of Results (Outcome) 2013-14 to 2015-16 Batches

Analysis of the results from 2013-14 to 2015-16 batch shows that there is a recognisable improvement in the results of students belonging to high category (>360). It was just 53.70% in the I Semester and it raise to 79.00% in VI Semester. At the same time there is a considerable decline in the results of students belonging to below category (<240) i.e., from 24% to 12% for the same period.

Of course we accept the dropout of the batch of 17.7% for the reasons beyond our limit. This is mostly due to marriage and a few students opting for jobs before finishing their course and majority of the students are from rural area and from low income group families.

Analysis of Results (Outcome) **2014-15 to 2016-17 Batches**

Analysis of the results from 2014-15 to 2016-17 batch shows that there is a recognisable improvement in the results of students belonging to high category (>360). It was just 60.00% in the I Semester and it raise to 79.00% in VI Semester. At the same time there is a considerable decline in the results of students belonging to below category (<240) i.e., from 20% to 11% for the same period.

Of course we accept the dropout of the batch of 12.00% for the reasons beyond our limit. This is mostly due to marriage and a few students opting for jobs before finishing their course and majority of the students are from rural area and from low income group families.

Reasons for Improvement of Results

1. Conduct of special classes.
2. Monthly test and assignments.
3. Revision classes.
4. Conduct of mock examination
5. Solving question papers of previous years.

