



## 2013-16

Year And Sem Internal Assessment Marks						University Exam Marks							
	High -3	Medium -2	Low -1	Below -0	Percenta ge	NO App eare d	Total Pass	High -3	Medium -2	Low -1	Below -0	N A	Perce ntage
2013- 14	16- 20	12--15	8-- 11	8	%			60- 80	50-60	40- 50	40		
I Sem	100	1	Nil	Nil	High-99	101	66	15	24	27	35	2	65.34
II Sem	88	1	1	Nil	High-98	99	65	26	17	22	25	8	72.2
2014- 15													
III Sem	79	2	2	Nil	High- 95.1	83	65	18	16	31	18	4	78.3
					Medium- 2.40								
IV Sem	78	1	Nil	Nil	High-99	79	74	29	22	23	5	1	94
2015- 16													
V Sem	70	Nil	Nil	Nil	High- 100	70	67	32	20	15	3	2	96
VI Sem	69	1	Nil	Nil	High- 98.5	70	68	40	14	14	2	Nil	97.14

## 2014-17

### Year & Sem Internal Assessment Marks

### University Exam Marks

Year & Sem	High	Medium	Low	Below		NO Appear ed	Total Pass	High	Medium	Low	Below	NA	%
2014-17	-3	-2	-1	-0	%			-3	-2	-1	-0	NA	%
2014-15	16-20	12--15	8--11	8	%			60-80	50-60	40-50	40		
I Sem	88	8	2	1	High-89	99	78	26	21	31	21	5	79
					Mediu m- 8.0								
					Low-2.0								
					B.1.0								
II Sem	89	1	Nil	1	High-98	91	68	25	19	24	23	3	75
					Mediu m- 1.09								
					B-1.09								
2015-16													
III Sem	77	1	Nil	3	High-95.06	81	51	9	9	33	30	2	63
					Mediu m- 1.23								
					B-3.7								
IV Sem	74	Nil	Nil	1	High-99	75	66	22	24	20	9	4	88
					B-1.33								
2016-17													
V Sem	66	4	2	Nil	High-92	72	68	36	20	12	4	2	95
					Mediu m- 5.55								
					Low-2.7								
VI Sem	71	Nil	Nil	Nil	High-100	71	69	31	18	20	2	1	97

## 2015-18

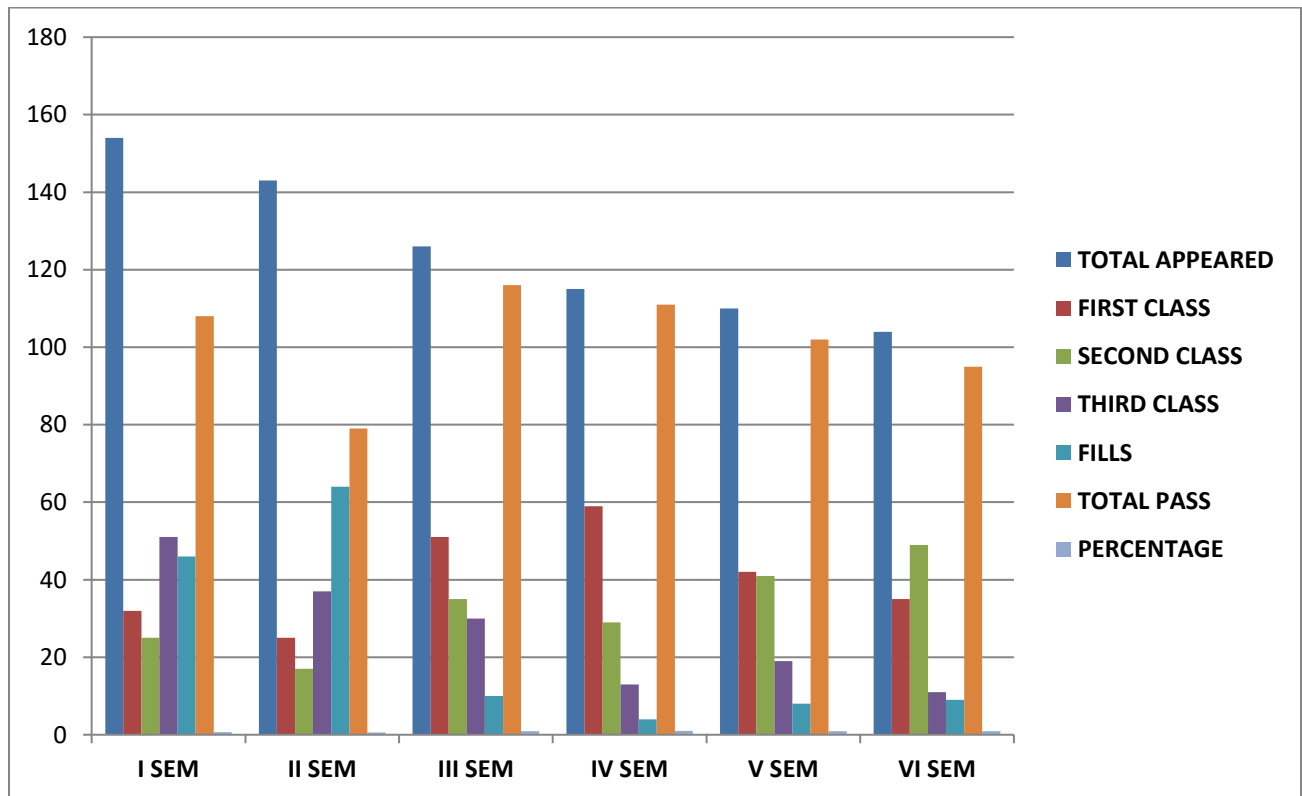
### year & sem Internal Assessment Marks

### University Exam Marks

2015-18	High-3	Medium-2	Low-1	Below-0	%	NO Appeared	Total Pass	High-3	Medium-2	Low-1	Below-0	NA	%
2015-16	16-20	12--15	8--11	8	%			60-80	50-60	40-50	40		
I Sem	94	Nil	Nil	Nil	High-100	94	75	16	24	34	19	8	80
II Sem	96	Nil	1	Nil	High-99	97	77	24	18	35	20	3	79.3
					Low-1.03								
2016-17													
III Sem	80	2	Nil	Nil	High-97.5	82	70	27	18	25	12	1	85.3
					Medium-2.43								
IV Sem	78	Nil	Nil	Nil	High-100	78	70	31	26	13	8	4	90

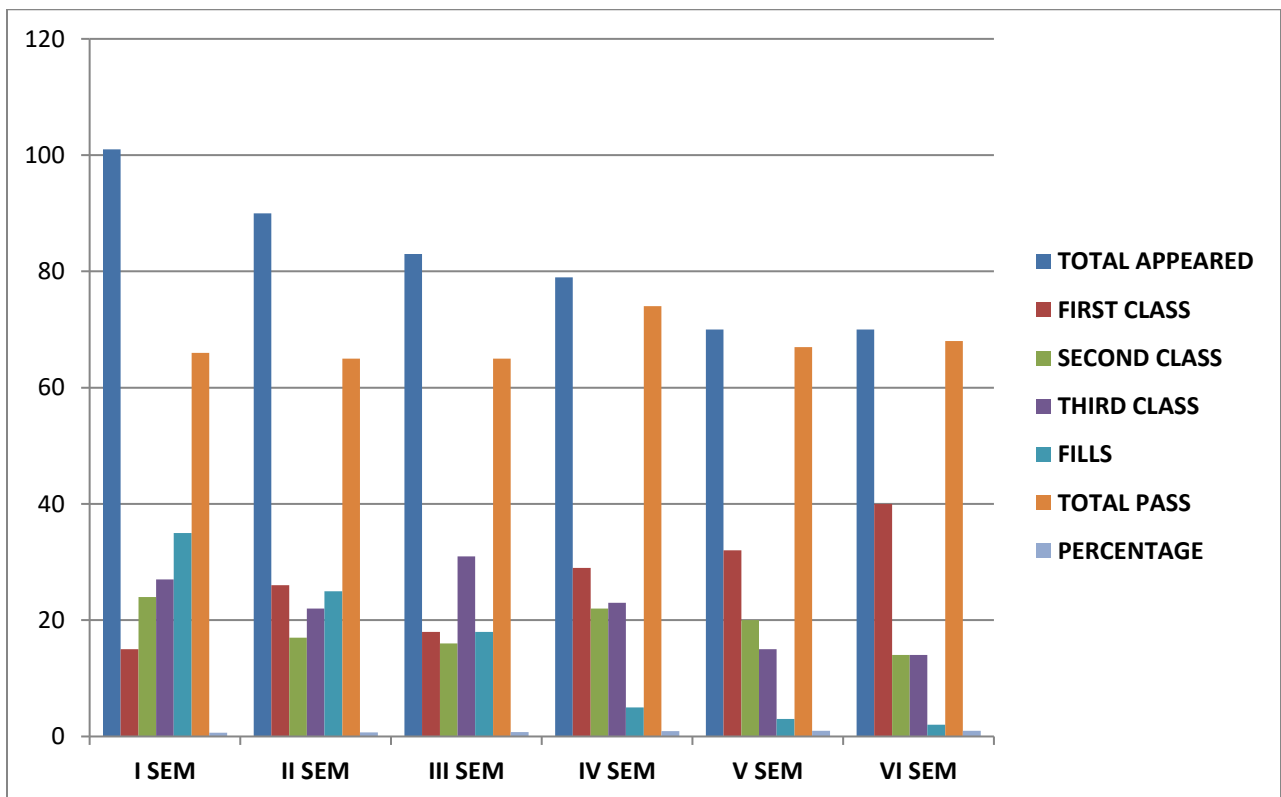
## 2012-15

	I SEM	II SEM	III SEM	IV SEM	V SEM	VI SEM
TOTAL APPEARED	154	143	126	115	110	104
FIRST CLASS	32	25	51	59	42	35
SECOND CLASS	25	17	35	29	41	49
THIRD CLASS	51	37	30	13	19	11
FILLS	46	64	10	4	8	9
TOTAL PASS	108	79	116	111	102	95
PERCENTAGE	70%	55.20%	93%	97%	93%	91.34%



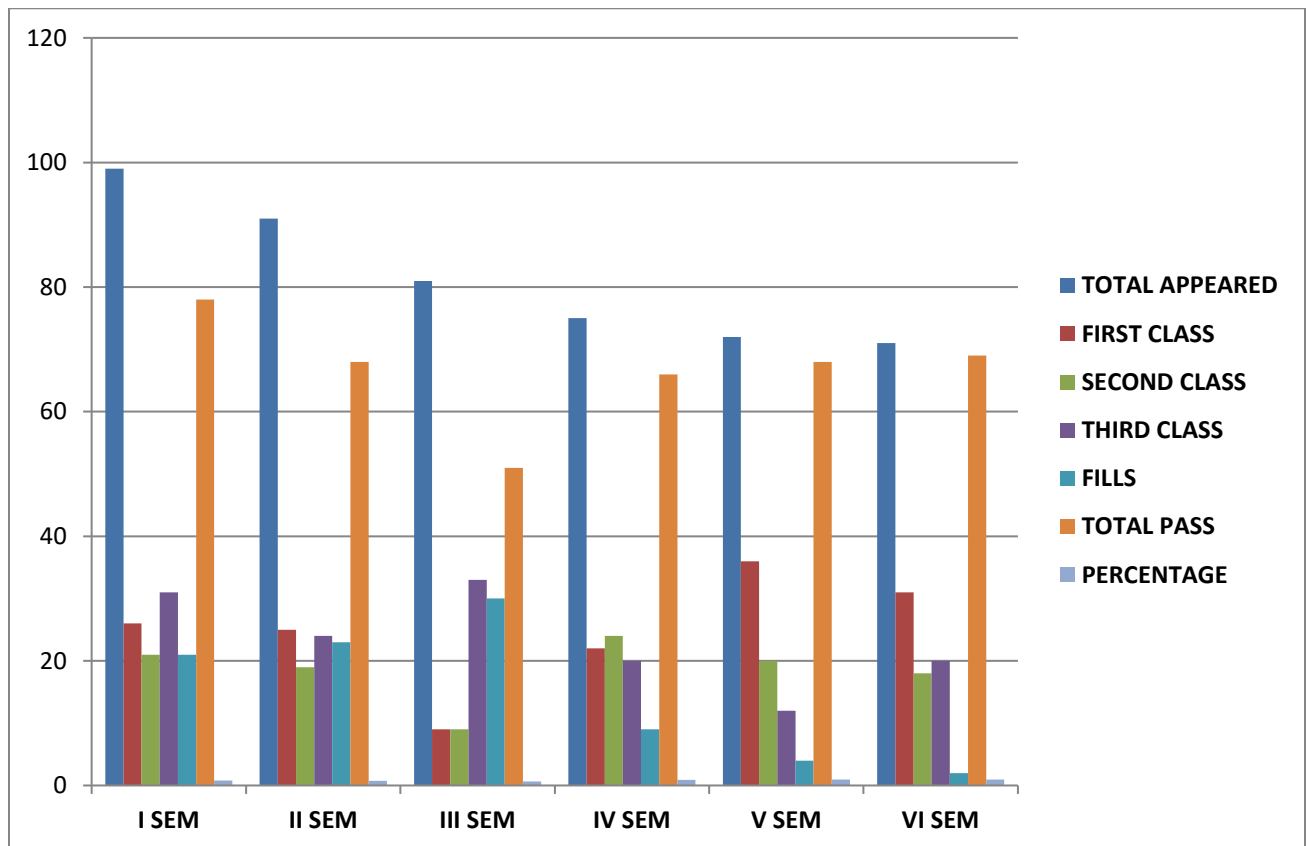
## 2013-16

	I SEM	II SEM	III SEM	IV SEM	V SEM	VI SEM
TOTAL APPEARED	101	90	83	79	70	70
FIRST CLASS	15	26	18	29	32	40
SECOND CLASS	24	17	16	22	20	14
THIRD CLASS	27	22	31	23	15	14
FILLS	35	25	18	5	3	2
TOTAL PASS	66	65	65	74	67	68
PERCENTAGE	65%	72.20%	78%	94%	96%	97.14%



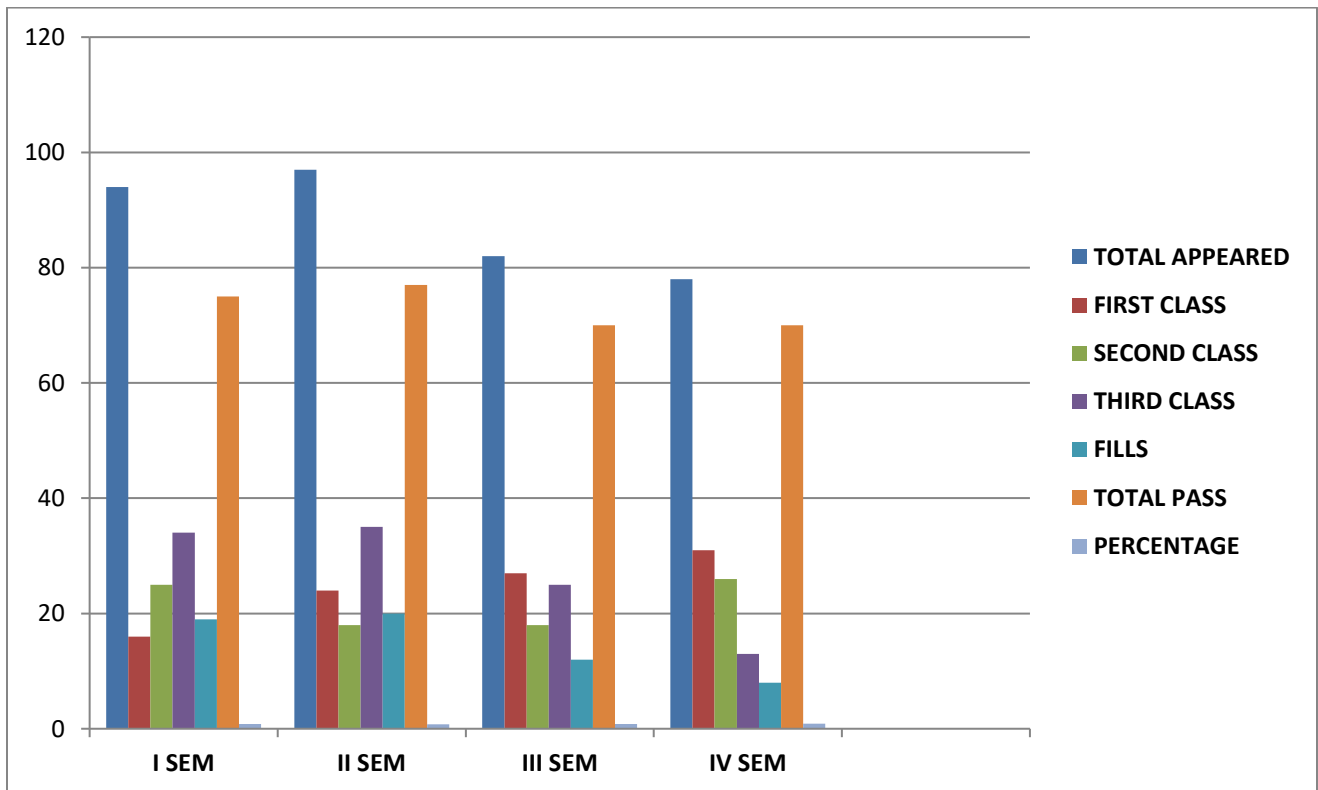
## 2014-17

	I SEM	II SEM	III SEM	IV SEM	V SEM	VI SEM
TOTAL APPEARED	99	91	81	75	72	71
FIRST CLASS	26	25	9	22	36	31
SECOND CLASS	21	19	9	24	20	18
THIRD CLASS	31	24	33	20	12	20
FILLS	21	23	30	9	4	2
TOTAL PASS	78	68	51	66	68	69
PERCENTAGE	79%	75.00%	63%	88%	95%	97.00%



## 2015-18

	I SEM	II SEM	III SEM	IV SEM
TOTAL APPEARED	94	97	82	78
FIRST CLASS	16	24	27	31
SECOND CLASS	25	18	18	26
THIRD CLASS	34	35	25	13
FILLS	19	20	12	8
TOTAL PASS	75	77	70	70
PERCENTAGE	80%	79.30%	85%	90%





## **RESULT ANALYSIS**

Course outcome attained from course exit survey for the academic year 2014-16, in the subject Economics is as shown in the graph.

An attempt has been made to summarize students' performance of batch that entered semesters in the year 2014. The pass percentage of BA I semester is 79%, II semester 75%, III semester 63%, IV semester 88%, V semester 95%, VI semester 97%.

The overall analysis of the above results shows that the performance in III semester is not that good. The reason is most of the student come from rural areas their basic knowledge of Mathematics is very poor. Arts student finds it difficult to follow Mathematics and Statistics [III semester- Mathematics and Statistics for Economics]. Most of the students join BA course just to obtain degree.

We conduct special classes, unit tests, seminars, and we pay extra attention to weak students. Appreciation prizes are given by the department staff to motivate them to score more marks. By our sincere efforts the pass percentage has increased to 97% in VI semester.

## **COURSE OUTCOME**

Economics plays a key role in all aspects of life and is an important subject worth knowing more about.

Economics is a human oriented subject, though it may appear to be all about money on the surface. Economics can in fact be defined as the study of how people allocate and utilize resources on an individual and collective basis.

Economics graduates can cast a much wider net in their job search. Those who complete Economics programs can find work in a huge variety of industries, from banking and insurance to real estate and public service.

Economics students are known for their analytical and critical thinking skills. Economics programs equip you with the skills that many companies need. Employers value workers with well developed abilities.

Economics students learn to think analytically about issues of economic efficiency, globalism, wealth and poverty and social justice.

Many of our students are doing PG in Economics, Ph.D., some have joined B.Ed., and some are employed in Banks, Industries. So it has both theoretical and practical importance.